



Side door



Scan the QR code to discover more & receive a quotation!

VebaBox
Cold Chain Innovators

STANDARD LINE MODEL P COOL

SPECIFICATIONS

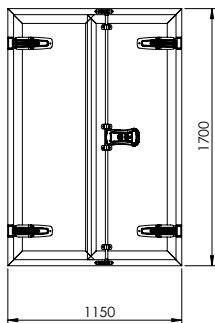
| | |
|--|------------------------|
| Box volume | 1900 liters |
| External dimensions (wxhxd) | 1150 x 1700 x 1460 mm |
| Inside dimensions (wxhxd) | 1044 x 1594 x 1028 mm* |
| Nett. weight | 125 kg |
| Temperature setting range | 2°C to 25°C |
| Ambient temperature | -20°C to +50°C |
| Equipped with Thermal Unit | TUC2001 |
| Power source, max. power draw @ 12V | 50 A @ 12V |
| Power source, max. current @ 110~230V AC (50/60Hz) | 3.6 A @ 230V |
| Wall thickness | 50 mm |

A VebaBox includes: Thermal unit, installation set, 12V Power cable and 110 / 230V shore power connection.

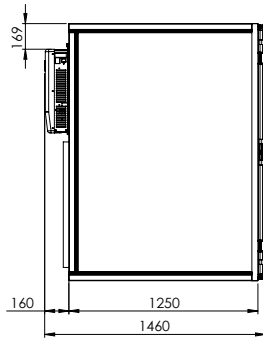
* Dimensions until thermal unit.

DIMENSIONS IN MM

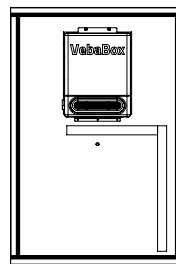
FRONT VIEW



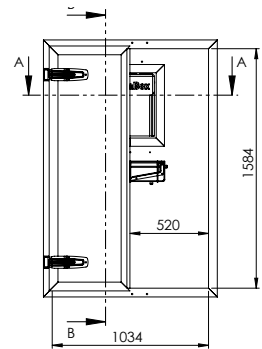
SIDE VIEW



REAR VIEW

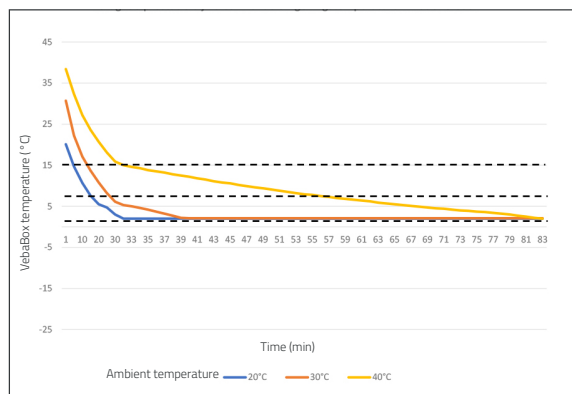


WITHOUT DOOR



COOLING AND HEATING PERFORMANCES

Cooling performance at different ambient temperatures Model P Cool



Heating performance at ambient temperature Model P Cool

